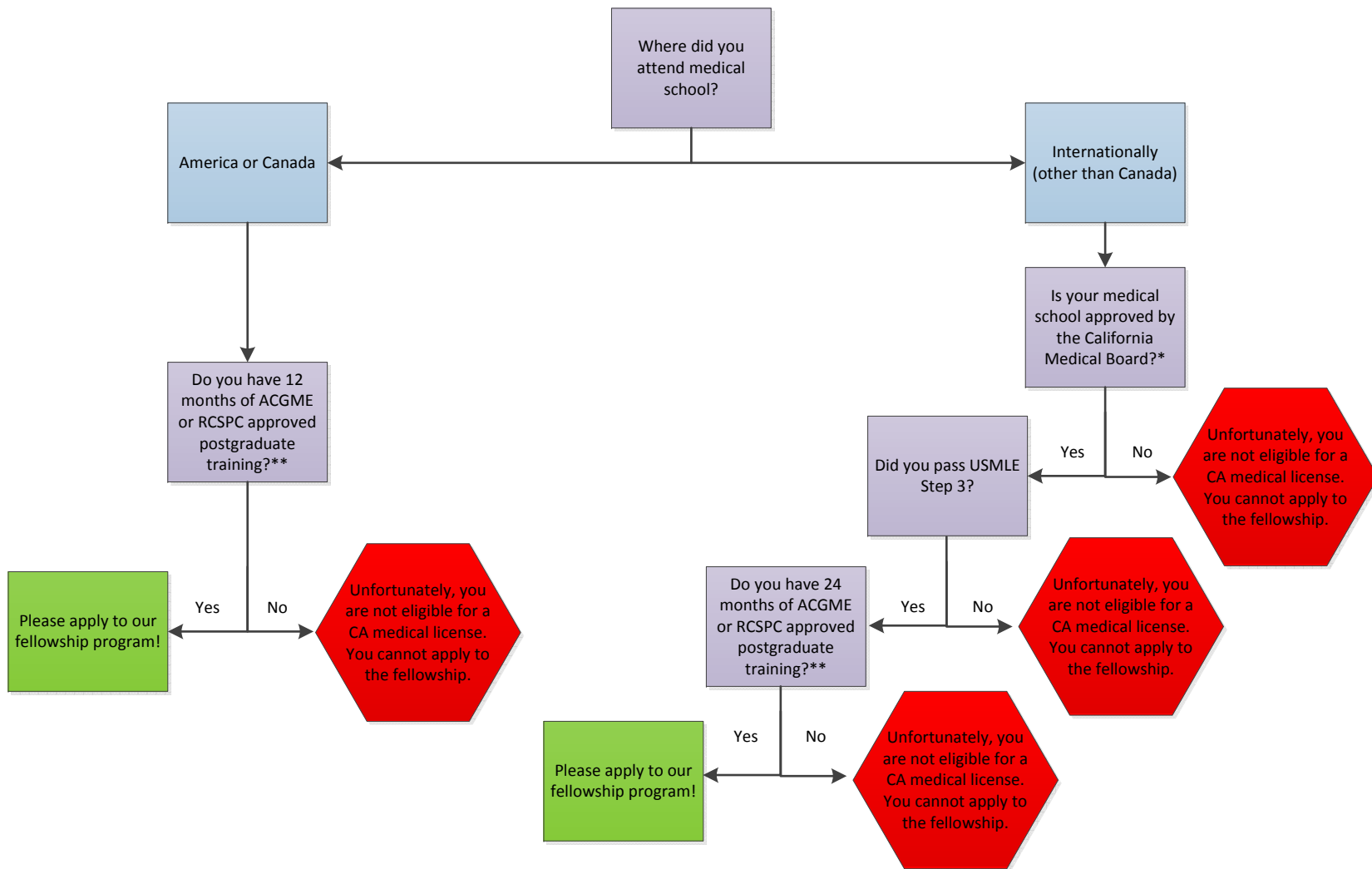


All Candidates must be eligible for or possess a California medical license. You can use this flowchart to help determine your eligibility for a California medical license.



*To look up your medical school on the CA medical board's approved list, click here: www.mbc.ca.gov/Applicants/Medical_Schools/

**To see if your postgraduate medical training program is on the ACGME or RCPSC approved list, click on the link below:

ACGME accredited training programs: <http://www.acgme.org/ads/Public/Programs/Search>

RCPSC accredited: <http://www.royalcollege.ca/portal/page/portal/rc/credentials/accreditation/arps/specialty/urology>